

Written Makeup Lesson by Junie Sutton

Hi Beauty! If you're reading this, it means that you got a makeup lesson with me, Junie Sutton. You are about to read a detailed breakdown of how to apply your makeup. I did my best to explain each and every step so that it would be easy to learn while reading it off a page. Just so you know, this guide is not necessarily meant to be read in one sitting. You definitely can read the whole thing if you want to, but it's more for a refresher on specific sections after your lesson. If you want a reminder on how to apply bronzer, skip to the bronzer section, and so on and so forth. Remember, this guide is for a full face of makeup. You don't have to put on a full face every day! Sometimes it's fun to just make your lashes and lips pop. Other times it's great to have clean looking skin like the "no makeup" look. So choose what you want and have fun with it. I have a few tutorials posted on my Youtube Channel and my Instagram page (@juniesutt) that are free to check out and always available to use.

I speak mainly here about the steps and not so much about products. If you scroll down to the bottom, you can see my list of recommended products from each category that I've either tried myself or heard are great from other people (both drugstore & high end products). You can choose from that list which product you'd like to use for the steps below. Additionally, I added a section listing your makeup vanity necessities including what types of brushes you'll need. I talk about brushes throughout but the list on the bottom should help specify and put them all together for you. Enjoy!

Quick Tips Before You Begin:

- ❑ Don't get overwhelmed by the length of this lesson. You don't have to sit and read it all in one shot. Think of it like an index. If one day you want to brush up on your blush skills, then go to that section. If another day you want to brush up on your eyeshadow skills, then only look at that section and so on...
- ❑ Breathe and take your time. Remember it's all a learning experience. Practice makes perfect. You will not get it all right on your first try.
- ❑ If something isn't coming out the way you wanted, move on and revisit it. Don't spend too much time trying to make it perfect, you'll drive yourself crazy.
- ❑ Don't overthink it. Start with two colors on a palette that are next to each other and as you improve add more to your eyeshadow look.
- ❑ Choose colors that complement your outfit. This means that your makeup doesn't necessarily have to match it exactly- as long as the colors work together!
- ❑ Have Fun!

Makeup Prep:

- Now before we get into the actual steps, make sure you're comfortable (for a detailed look I like to sit down but for quicker ones I usually stand) and in front of a mirror with good lighting so you can see what you're doing! I personally love listening to music while I do my makeup because why not make it more fun?! ;)
- I included the skincare / morning routine that should be accompanied before doing your makeup. Prep is just as important as the makeup application.

- ❑ **Step 1:** **Exfoliate** your skin for a flawless, smooth makeup application. Exfoliation should only be done a couple times a week, not every day. You can also exfoliate the night before.

- ❑ **Step 2:** **Cleanse** using a cleanser that's fit for your skin type. For cleaner options, see below.

- ❑ **Step 3:** **Tone**- use a liquid toner on a cotton round and swipe it all over your face to catch any other dirt you may have missed while washing.

- ❑ **Step 4:** **Lip Scrub/Balm**- for a super smooth lip application, scrub your lips and follow with lip balm. You may have to lightly remove the lip balm before you apply lip liner or lipstick because the lipstick can slip off and not apply well.

- ❑ **Step 5:** **Serum**- apply a small amount all over your face. Use one appropriate for your current skin concerns or one made specifically for makeup application that leaves a glowy look underneath, for example.

- ❑ **Step 6:** **Eye Cream**- apply pea sized amount with your ring finger gently under your eye area.

- ❑ **Step 7:** **Moisturize**- use a moisturizer that's fit for your skin type. Apply all over your face and neck. Don't put too much. Over prepping your skin can also lead to a poor application.

- ❑ **Step 8:** **Oil**- helps to seal everything underneath your skin that you just applied. The goal with moisturizer is to penetrate and deliver moisture to the skin where the goal for oil is to lock in and seal that hydration. However, as a general statement, thinner oils would usually go under moisturizer whereas thicker oils go on top of moisturizer. **Pro Tip:** You know your face and skin better than

anyone. If you feel like moisturizer AND oil is too much, then apply the more important one or less of each one.

- ❑ **Step 9: Prime**- this helps set the makeup in place and makes it last all night long. There are primers based on the finish you want as well as your skin type- choose wisely!
- ❑ **Step 10: Prime your eyes** with either a *Mac Paint Pot* (in colors *Soft Ochre*, *Painterly*, or *Bare Study*) for a nude base or an eyeshadow primer (like *Shadow Insurance* from *Too Faced*) for a clear base. Be careful not to apply your eye primer too thickly or else your eyeshadow will crease. I suggest that if you use the paint pots make sure you set them with a translucent powder before applying your eyeshadow to avoid creasing. You can apply the eye primer with any flat brush and blend it out with a fluffy tapered brush. It doesn't have to look perfect, it's just your base. Sometimes, I like to use both: a bit of primer followed by concealer or a paint pot to guarantee no creasing and to also have a nude base to start with.

Makeup Application:

- ❑ **Step 11: Eyebrows**- Start by filling the empty spots and then slowly just add to the natural shape of your brows. Don't get too close to the center of your forehead, where your eyebrows meet. It makes them appear to be "angry" looking. I like to use an eyebrow pencil- *Anastasia Beverly Hills* and *Maybelline* have great ones- one side has a pencil and the other has an eyebrow brush which works as an eraser. You can also use eyebrow powder with an angled brush. Another option is to use a brow pomade with an angled brush to fill your brows. If you don't have any brow products, find an eyeshadow color that matches your eyebrows and use that with an angled brush.
- ❑ **Step 12: Eyeshadow**- many people are intimidated by doing their own eyeshadow. It's actually not as hard as you think. My first tip always is- if you really think you're incapable, just put one light or shimmery color all over your eyelid and see how that comes out! If you're going to use a shimmer just make sure not to blend it too high. Once you get better you can start blending two, three, and even more color combinations! Once you feel ready to take on something more, you can start by using a flat brush to apply shimmers (or shadows) on your lid and a blending brush to apply shadows in your crease.

Start by taking your blending brush and very gently brushing a light nude color across your crease. Feel free to tap the brush on a table before applying so it doesn't apply harshly. Go back and forth many times and blend away in small circular motions. When you want to add dimension, gently place a darker color on the outer parts of your eyes and then blend it out with a blending brush. Make sure not to go too high above your crease with these darker colors. The darker color you use, the smaller the blending brush you should use. Keep the darker shade toward the outer parts of your eyes only. You can also add a lighter color more towards the center of your eyelid. Dip the flat brush into a light or shimmery color and drag it across your eyelid, starting from the inside of your eye and finishing towards the center. The shimmery or lighter colors should be on your lid towards the inside of your eyes and the darker colors on the outer parts of your eyes. You can use an eyeshadow palette as a guide for which colors to use where. This is one basic style of eyeshadow that can be recreated tons of times using different colors. You can call it “light to dark.” **Pro Tip:** For a beginner, I would recommend only starting off with one or two colors for the outer lid and one shimmer for the inner parts of your eyes. Work your way up as you improve. You can finish off by applying a really light color (even highlighter) to your brow bone with a blending brush. It will make your eyes pop.

If you want to make it more dramatic, you can add a teeny amount of the darker color on the inner corner of the eye and blend that out too. This creates a “halo” effect in which there is one lighter color in between two of the same darker eyeshadow shades. This isn't something I would recommend to a beginner and it is a very specific type of look. I would recommend it for someone whose eyes are far apart. The darker color in the inner corners will give them the appearance of the eyes looking closer together.

A third common eyeshadow technique is having a darker color on the top and a lighter color on the bottom / eyelid. You use the dark color only in the crease and go back and forth, side to side. You place with a flat brush the lighter color all over your eyelid. This look gives the eyeshadow a “sunset” effect.

- ❑ **Step 13: Eyeliner**- At this point, for a more natural look, you can choose to opt out of putting eyeliner. Sometimes depending on the look, liner isn't really required. However, for the cases when liner is, this is how it should be done: I would first recommend practicing eyeliner with no eyeshadow on so that if you mess it up, you can fix it. To start, you have two options. You can use an eyeliner brush with a pot of liner or a liner pen. For the brush method, dip an angled or

eyeliner brush in the pot. Make sure you don't have too much product on the brush and that the product is smooth on it so it won't apply chunky. Depending on the brand, some liners may be drier than others. Be careful not to leave the pot open while you're lining your eyes or you run the risk of drying out the whole pot. You can also use *Duraline* from *Inglot* to help loosen the liner in the pot to make it apply more smoothly as well as revive a dried out pot. DO NOT look up while using *Duraline* unless you want the entire line you drew to transfer to the top of your eyelid.

I always direct by saying that everyone's eye shapes are different and it will definitely take time and practice to realize the way you like your liner to be. For most eyelids, to start off I would say to line your eyes in the direction that your bottom line of your eyes goes. It would be as if you are continuing the direction of the line of your bottom of your eye in a more upward angled direction. The longer you go, the longer the wing. You can make a short baby wing or extend and make a longer, more dramatic one. If you like liner on top but don't want a wing then simply line the top of your eyelid without extending it. It will take practice to get as close to your lid as possible without having space between the eyeliner and your eyelid.

If you have hooded lids, however, this may not be the best option for you. Hooded eyelids are when the fold of your eyelid covers part of your eye so if you applied eyeliner on the upper line of your eyelid, it wouldn't show when you open your eye. For this eye type, I would recommend lining your eyes with your eyes open! You can line slightly according to the bottom line of your eye and then finish lining with your eye open so you make sure that it will show when your eyes are open. The shape might be funny when you close your eyes so you can fill it in- it won't show anyway when your eyes are open.

Here are a few other tips you can try whether your eyelids are hooded or not. You can make a straight wing straight across your eye, and go in the direction of your top eyelid, not the bottom one. This may be more flattering for many eye shapes than the first tip. Depending on your age, if you have more wrinkly eyelids you will have to make a much thicker line because the line that ends up showing up will be much thinner than what you draw when your entire lid is pulled back. The same goes for Asian eyes- you will have to draw a much thicker line because when you open your eyes your eyelid will cover most of the work.

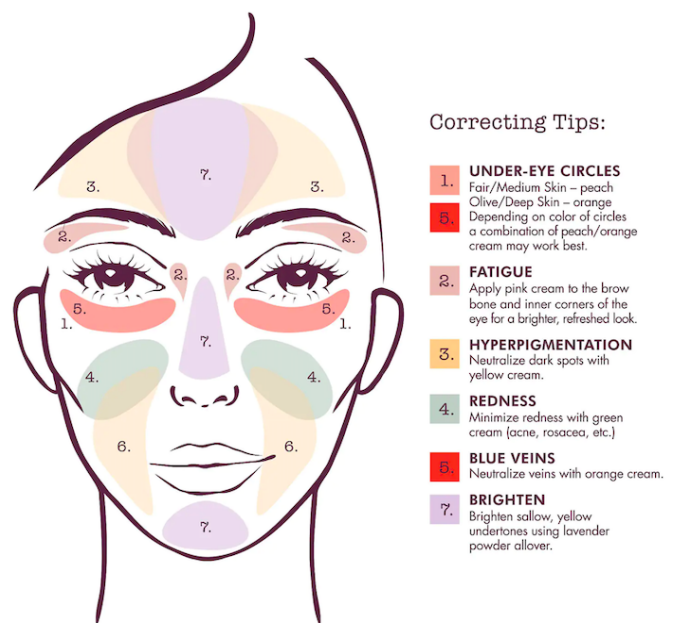
- ❑ **Step 14: Lashes**- is another one of those things that you must practice doing on yourself many times before you get good at it. It is very easy to get frustrated while applying your own lashes so *deep breaths*. If you're a beginner, use white lash glue (dries clear) to apply. If you're more experienced you can use darker/black lash glue but beware! If you mess up and smudge that black glue on your eyelid, there's no going back. You'd be able to patch it up with a little makeup remover on a cotton swab and then go over again with eyeshadow but it won't be exactly the same as how it was. A great company for lash glue is *Duo*. Now there are two different types of lashes: strips and individuals. Strip lashes are easier to apply, have more of a dramatic flare to them (for the most part) and are easier to remove. Individuals are harder to apply, look more natural (for the most part), and are a little more annoying to take off (be careful not to rip out your own lashes!). However, to make it even more confusing there are also individual trios which are basically like three lashes attached to each other and they're a combination between strip and individuals. In my opinion, you can make strip lashes look natural and individuals look dramatic based on the type of lashes that they are, and the amount of the lashes that you choose to apply. That's why I say for the most part. It's important to make sure the lashes you're applying, strip or individual, will look good with your eyes. If the strip is too long, cut it before applying. Do you like long individuals, or medium or short? If your lashes aren't naturally long, don't apply individuals that are too long, they won't look real or good. For strip lashes, apply a nice strip of glue onto your lashes. Don't be cheap with glue, put a nice strip on that lash (*See photo*). Once you do that, let it dry for five minutes. If you don't let it dry for long enough it will keep falling off as you try to apply it. I like to set the glue down before I even start my makeup so it's ready by the time I want to apply. Once you let it dry, hold a handheld mirror below your chin and hold the lashes with tweezers. The best way to get a view of how you're applying it is with the mirror in this position and your head tilted back. Carefully place the lashes on your lash line. It should be placed in that teeny area where your lashes and eye lid meet (*See photo*). It will take multiple attempts, so this is another good thing to practice without makeup on. If you're using individuals, you will put down a short line of glue (dries faster than a glob) onto the pack of lashes. Once you let the glue dry for approximately five-ten minutes, you can dip each lash into the glue and apply it with tweezers as well with the mirror below



your chin and head tilted back. We're going to wait until later on to apply mascara because we want to make sure the lashes are dried and securely attached to your eyelid.

- ❑ **Step 15: Foundation**- When it comes to foundation you are going to have a few decisions to make. First of all, the type of coverage you want. Coverage means how “see-through”, or “covered” you want the makeup to be. A lighter coverage foundation will make your skin show through more versus a fuller coverage one. Aside from that, do you want your skin looking more mattified, satin, or dewy? Matte means no shine, dewy means your skin will be more glowy/shiny, and satin comes somewhere in the middle. Once you make those decisions the next step is to make sure it matches! Find a foundation that matches your jawline, not your neck which is usually a lot lighter than the skin on your face. Our skin tones fall into a category of three. We are either warm toned (yellow undertone), cool toned (pink undertone), or neutral (somewhere in the middle). Take the time to look at yourself and decide which category you fall under. This should help when choosing your color. Once you've made your match the next step is application. You can either use a foundation brush (*Sephora #47* is a great one), a sponge (*Elf* makes a great \$4 one!), your fingers, or a combination of all of those. Make sure you blend evenly ALL over your face, that means closing your lips and getting on that mustache and chin area. Don't forget to blend it into your neck. If it's a good match then you shouldn't have to do that much to make it match your neck anyway. If it looks a little light, don't worry. The bronzer will bring back all that tan. If it looks a little dark, keep blending it until you get as close to your skin color as possible. With time, you will master knowing which colors look right and which don't.

- ❑ **Step 16: Color Corrector** is used for a number of skin problems. It can be used for under eye circles, fatigue, hyperpigmentation, redness (pimples), blue veins, or simply dull skin. Depending on what you're covering, as well as your skin tone, there are a few different color correcting techniques you can use. See photo from Stila attached. Additionally, you are not supposed to blend in color correctors. It is

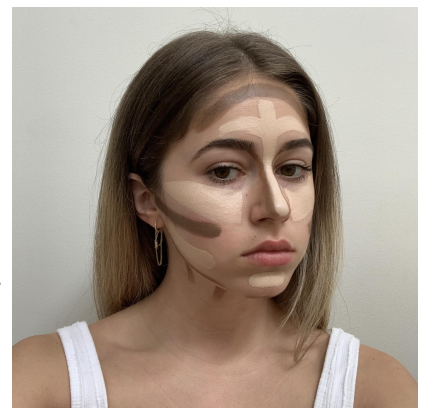


supposed to lay on top of the area you are trying to cover and the concealer will do the rest of the work in terms of covering up. So don't try to blend in the color corrector or you are completely stripping it of its purpose.

- ❑ **Step 17: Concealer**- put it on any color corrected spots as well as under your eyes in a “v” shape, making sure to get under the inner corner of your eye as well as the outer. Don’t overdo it. Too much concealer will crease. To blend, use either a concealer brush, your ring finger, or straight from the tube (if it has a wand) since it's your own. Blend it out in a dabbing motion, not a swiping motion because that will just remove the product you applied. When you get to the outer corner area, blend in an upward angle to give your eye a lifted effect, as well as clean up any eyeshadow that fell a little lower than it should’ve. If you put too much, blend it out with a small fluffy brush to thin it out and set with a translucent powder. Or you use your ring finger and lightly dab.



- ❑ **Step 18: Contouring**- Our faces have certain areas where shadow naturally hits. Contouring deepens those shadows creating a more chiseled, defined, and sculpted effect. Bronzer then takes it to the next level by adding some warmth, like adding a “tan.” You can still skip contouring and bronzer can somewhat make up for what you skipped, but contouring is more about defining the parts we like about our face shape where bronzing is more about giving yourself a tan. With that being said, to make life easy I’m going to separate contouring into cream products only and bronzing into powders only. (Although technically, there are bronzing products that come in cream/stick form.) For contouring, you can use either a cream contour palette with light and dark creams, or cream contour sticks that just come as one dark color. If using a palette, you can use a concealer brush to apply the contour. Just make sure you use two different brushes for the lighter and darker areas. Feel free to skip the light areas if you already used concealer and feel like it's enough. If you’re using a contour pen with a brush attached, or a contour stick, then apply it straight on with that. *See*



the photos attached to see where to place the dark lines and the light lines. The dark lines go in the areas that shadow naturally hits. The light lines are going in the places you want to bring out and accentuate. Once you're done "drawing" those lines, it's time to blend. You can use a face blending brush or a sponge to blend. The sponge should be soaked under water and then squeezed out very well. If necessary, use both a brush and sponge. Blend first with the brush and remove the lines after with the sponge. Start by blending out the "concealed" or lighter areas first. Make sure you don't blend too much of anything because then it defeats the purpose of what you're trying to achieve. If you want, you can now put translucent powder over the light areas and let it "bake" in while you blend out the darker areas (*see next step*). Next, blend in the darker areas. Again, don't over blend, but also don't under blend either that the lines will still show. Once you're happy with how it's all blended out, it's time to set it.



- ❑ **Step 19:** Translucent Powder- is great for setting in all the previous makeup that was applied and setting up a base for powder bronzer and blush. **Pro Tip:** If you applied your cream contour, then apply translucent powder after on the light areas only. Leave it there for ten minutes and when you're done lightly brush off the excess. This will leave you with a smooth flawless matte application. This process is called "baking." You can do this before you blend out the dark areas of your contour so it can set while you're blending. If you just want to apply bronzer without contouring, then you can apply translucent powder right when you finish your concealer all over your skin. However, make sure to also get under your eyes to avoid concealer creases. **Pro Tip:** Cream goes under powder. If you try to apply cream on top of powder it will essentially erase all your previous hard work. That means if you want to use cream blush and highlighter, you should apply it before you put translucent powder or skip the powder altogether.
- ❑ **Step 20:** Bronzer- I always like to tell my clients that bronzer gets applied in the shape of a number 3 on both sides of your face (but I'm not gonna lie, sometimes I just bronze all over). For a more defined look, though, you should put bronzer in that shape 3. On your forehead area, mid cheek area and lower face and neck area. Really wherever the sun hits, so even your nose works. Use an angled face brush or a big fluffy face brush to apply.

- ❑ **Step 21: Blush**- if you quickly pinch your cheek, see what colors it turns. If you take a short run around the block, see what color your skin flushes to- that is the color of blush you should be using. Blush is the first thing to fade so don't be afraid of putting too much, it will go away. There are many different spots you can apply blush and they all depend on the look you're going for. The classic spot would be on the apples of your cheeks. Dip the brush in powder and hit it against the table so the color doesn't apply harshly. Smile and put it on the apples of your cheeks, blending it in an upward and outward motion away from your face. For something a little different, I've seen people bring the blush up to their cheekbone where highlighter usually goes. You can also put it on your nose so it looks like a little natural touch of sun. There are always going to be different makeup trends going around so I just like to give you different ideas.

- ❑ **Step 22: Highlighter**- can be applied with a fan brush or a large fluffy tapered brush (*Real Techniques Setting Brush* is my fav). Personally, I prefer to use that over a fan brush. You apply it high up on your cheekbones above the bronzer as well as on your nose and slightly above your lips. You can also put a little on your chin. It's all optional and really depends on how glowy you want to be.

- ❑ **Step 23: Eyeliner (bottom)**- As far as eyeliner goes, you can apply it inside your eye (which is in your waterline) as well as outside of your eye (which is under your waterline). Inside your waterline is literally inside your eye, when you have to open up your eyelid in order to apply it. There's a little line that shows when you open- that's your waterline. Be careful with lining the inside. If you have a small eye you shouldn't necessarily line the inside of your eyes with black. It will close them up. You can line the inside with a nude or a white but start with nude because sometimes the white is too harsh. If you have bulgier eyes this is a good opportunity to use black liner in the waterline. Under the waterline is under your bottom eyelashes and outside of your eye. A dark color under the eye will give the effect of larger looking eyes. I love applying it on the outside and connecting it to the line that was made from the top eyeliner. If you have small eyes and still want to line the inside with black, put a pop of something under your eye in order to enlarge it. (You can also do it regardless if your eyes are small.) It helps open the eye even when black liner is applied to the inside. You can use a pencil that sharpens, a retractable pen, a gel pot like from the top liner, or for under your eye, eyeshadow!

- ❑ **Step 24: Mascara**- If you've already applied lashes or you just want to apply mascara on your natural lashes, curl them with a lash curler before applying the mascara. Make sure you don't just clamp the curler on one section of your lashes, rather, you should open and close it as you curl up your lashes so they stay in a nice curled shape rather than just bending upwards. Mascara may seem like one of the easier steps however there's definitely precision to it. You should make sure to coat all your lashes from root to end. Sometimes this means using more than one mascara to do so. Just be careful that you don't get mascara on your upper eyelid where your eyeshadow is. If there's no eyeshadow there and you do get mascara in that area, then let it dry and use a cotton swab with makeup remover to remove the black. Make sure every lash has mascara on it horizontally as well. You can try using a mascara brush instead of a typical spoolie to get all the way to the root. You can also use an eyelash separator after applying the mascara to separate any clumps. Apply mascara to bottom lashes too, if you want. However, if you're going to, make sure it's waterproof so there's no black fallout under your eyes.

- ❑ **Step 25: Lips**- For a long lasting lip, you want to start by lining your lips with your color of choice. It can be a bit darker than the lipstick color you plan on using. You can overline a little bit above the center of your lips. For the rest of your lips, simply line the natural shape- don't overline them. Fill in your lips to make sure your whole lip is filled with liner. This will ensure a long lasting lip. You can also go over with a liquid matte lipstick to make it last long. Next, you top it off with lipstick. These can match the liner or be lighter. Once lipstick has been applied you can top it off with a gloss. Be careful though, it is more likely to smudge with gloss on top. You can always bring the lipstick color with you wherever you're going.

- ❑ **Step 26: Setting Spray**- helps ensure that the makeup lasts. It can also leave a glowy or matte finish depending on the type of setting spray you choose. Spritz your face from far a few times and you're good to go!

- ❑ **Quick Tip: Brushes**- I would recommend using *Cinema Secrets Brush Cleaner* in between uses and cleaning with *Dawn Dish Soap* and water once a week. In order to serve your skin best, it is best to follow these cleaning rules.

Makeup Vanity Necessities:

Tools:

- Cotton Swabs
- Cotton Rounds
- Makeup Remover
- Tissues
- Garbage Can
- Brush Cleaner
- Hand Sanitizer
- Sharpener

Brushes:

- Face
 - Foundation Blending Brush
 - Concealer Brush
 - Sponge- rinse in sink and squeeze out all excess water
 - Angled Face Brush- for bronzer
 - Blush Brush
 - Highlighter Brush / Setting Brush
- Eyes
 - Angled Brow Brush
 - Precision Liner Brush
 - Tapered Blending Crease Brush
 - Mini Tapered Blending Crease Brush- to deepen
 - Mini Smudge Brush
 - Flat Eyelid Brush- for shimmers
 - Flat Mascara Brush- to get to the root of the lash

Products:

For links to shop the products below, click <https://shopmy.us/juniesutt>. Each product is alphabetized according to the order below and separated by category.

The list of products below gets updated every three months and the new/future versions can be downloaded from <https://www.juniesutt.com/>

<p><u>Skin Care:</u></p> <p><u>Pimple Patches:</u></p> <ul style="list-style-type: none">→ COSRX Clear Fit Master Patch→ Mighty Patch Invisible+→ Peace Out Acne Salicylic Acid Acne Healing Dots→ Rael Beauty Miracle Patch <p><u>Makeup Removers:</u></p> <ul style="list-style-type: none">→ Bioderma→ Bliss Makeup Melt Oil Free Makeup Remover→ Elemis Pro-Collagen Cleansing Balm→ Garnier Micellar Water <p><u>Cleansers:</u></p> <ul style="list-style-type: none">→ Biologique Lait U→ Cetaphil Facial Cleanser→ Cerave Foaming Cleanser→ Cerave Hydrating Cleanser→ Elta MD Foaming Facial Cleanser→ Garnier Skin Active Micellar Foaming Cleanser→ Glossier Milky Jelly Cleanser→ Indie Lee Rosehip Cleanser→ La Roche Posay Toleriane→ Mario Badescu Glycolic Foaming Cleanser <p><u>Toners:</u></p> <ul style="list-style-type: none">→ Biologique Recherche Lotion P50W→ Biologique Recherche Lotion P50 1970→ First Aid Beauty Facial Radiance Pads→ Fresh Rose Toner→ Indee Lee CoQ-10 Toner→ Neogen Toning Wipes in Lemon→ Neogen Toning Wipes in Green Tea→ Thayer's Rose Petal Toning Towelettes <p><u>Lip Balms:</u></p> <ul style="list-style-type: none">→ Aquaphor→ Blistex Lip Medex→ Olio E Osso Natural Lip & Cheek Balm→ Supergoop Lip Balm	<p><u>Bronzers:</u></p> <ul style="list-style-type: none">→ Anastasia Beverly Hills→ Benefit Hoola→ Bobbi Brown→ By Terry Tea to Tan→ Chanel Les Beiges Healthy Glow Bronzing Cream→ Charlotte Tilbury Airbrush Flawless→ Drunk Elephant D-Bronzi Anti-Pollution Sunshine Drops→ Guerlain Terracotta Bronzing Powder 04→ Mac in Golden→ Mac Mineral Skin Finish in Deep→ Nars Laguna Powder Bronzer→ Nars Laguna 01 Bronzing Cream→ Physicians Formula Murumuru Butter Bronzer→ Tom Ford Shade & Illuminate→ Too Faced Milk Chocolate/Chocolate Soleil <p><u>Blushes:</u></p> <ul style="list-style-type: none">→ Bobbi Brown Santa Barbara 13→ Charlotte Tilbury Cheek to Chic Walk of No Shame→ Charlotte Tilbury Cheek to Chic Ecstasy→ Charlotte Tilbury Cheek to Chic Pillow Talk, Pillow Talk Intense→ Fenty Beauty Cream Blush Summertime Wine 08→ Nars Orgasm Powder & Liquid Blush→ Makeup By Mario Mellow Mauve→ Maybelline Cheek Heat Cream Blush→ Milani Baked Blush→ Senna Slipcover Cream to Powder Cheeky Blush Palette→ Tarte Amazonian Clay 12-Hour Blush in Paaarty <p><u>Highlighters:</u></p> <ul style="list-style-type: none">→ Anastasia Beverly Hills Glow Kit→ Becca Rose Gold→ Dior Backstage Collection Universal Glow→ Iconic Liquid Highlight
---	--

Serums:

- Dr. Jart Cicapair Tiger Grass Serum
- First Aid Beauty Ultra Repair Hydrating Serum
- Glossier Futuredew
- Laneige Glowly Makeup Serum
- Sunday Riley A+ Serum
- The Ordinary Retinol
- The Ordinary Azelaic Acid Suspension 10%

Vitamin C Products:

- Biossance Squalane + Vitamin C Oil
- I Dew Care Bright Side Up Vitamin C Serum
- Mario Badescu Vitamin C Serum
- Murad Multi-Vitamin Infusion Oil
- Ole Henriksen Vitamin C Serum
- Paula's Choice C15 Super Booster
- Skinceuticals C E Ferulic
- The Ordinary Vitamin C Suspension (23% & 30%)

Eye Creams:

- Clinique Pep Start Eye Cream
- Embryolisse Eclat du Regard
- Estee Lauder Advanced Night Repair Synchronized Recovery Complex II
- Glam Glow Bright Eyes Eye Cream
- Molton Brown Eye Gel
- Peter Thomas Roth Retinol Fusion PM Eye Cream
- The Ordinary Caffeine
- Tonymoly Moisture Boost Hydro Gel Eye Patches

Moisturizers:

- 10.o.6 Seriously Shine Free
- Alba Botanica Moisturizer
- Cetaphil Deep Hydration
- Cetaphil Moisturizing Lotion
- Charlotte Tilbury Magic Cream
- Elizabeth Arden Eight Hour Cream
- Elta MD UV Daily
- Erborian Yuza Double Lotion
- Erborian CC Dull Correct
- First Aid Beauty Coconut Water Cream (Oily Skin)
- First Aid Beauty Ultra Repair Cream Intense Hydration Moisturizer (Dry Skin)

- Kevyn Aucoin Glass Glow Highlighter in Rose Gold or Bronze
- Hourglass Cosmetics Ambient Lighting Palette
- Natasha Denona Glow Gold Highlight Duo
- Physicians Formula Murumuru Butter Highlighter Palette
- Smashbox x Becca Champagne Pop
- Westmann Atelier Super Loaded Tinted Highlight

Mascaras:

- Benefit Bad Gal Bang
- Blinc Heated Lash Curler
- Clarins Double Fix Mascara
- Diorshow Iconic Overcurl & Waterproof
- Essence Lash Princess False Lash Effect (Regular & Waterproof)
- Il Makiage Icon High Volume & Intense Curl Mascara
- Ilia Beauty Mascara
- Kaasage Eyelash Curler
- Kevyn Aucoin The Eyelash Curler
- Kevyn Aucoin The Volume
- Lancome Monsieur Big Mascara
- Lancome Cils Booster XL Super Enhancing Mascara Primer
- Laura Mercier Caviar Volume Panoramic Black
- L'Oréal Bambi Eyes (Regular & Waterproof)
- L'Oréal Double Extend (Red & White Tube)
- L'Oréal Paradise Voluminous Lash Paradise Primer
- L'Oréal Voluminous Lash Paradise Mascara (Regular & Waterproof)
- L'Oréal Voluminous in Blackest Black
- L'Oréal Voluminous Waterproof in Carbon Black
- Maybelline Sky High
- Neogen Dermalogy Extra Slim Metal Maxicara Black
- Smashbox Lash Primer
- Thrive Causemetics Liquid Lash Extensions
- Too Faced Better than Sex Mascara

Lips:

- Buxom Plumping Lip Polish in Celeste, Dominique, Sophia
- Careline Lipsticks

- Freck Ritch Bitch Moisturizer
- Genius Sleeping Collagen
- Grown Alchemist Tinted Hydra-Repair Day Cream
- Olay Regenerist
- Origins Mega Mushroom Relief and Resilience Lotion
- SkinCeuticals Triple Lipid Restore
- Supergoop Unseen Sunscreen
- Supergoop Glow Screen
- Supergoop Matte Screen
- Tatcha The Dewy Skin Cream
- Weleda Skin Food

Body Moisturizers:

- Environ Body Essentia Alpha-Hydroxy Derma-Lac Lotion (for KP)
- Environ Body Essentia Vitamin A, C, & E Body Oil (for KP)
- Patrick Ta Body Oil

Oils:

- Biossance Squalane Oil
- MUFE Ultra HD Skin Booster
- Nuxe Multi Purpose Drying Oil
- Tax Luxe The Face Illuminating Self-Tan Drops

Makeup:

Lash Glue:

- Duo Lash Glue Clear & Dark Tone

Eye & Face Primers:

- Elizabeth Mott Thank Me Later Eye Primer
- Il Makiage No Filter Primer
- Mac Paint Pots- Soft Ochre, Painterly, Bare Study (Eyeshadow Primers)
- Makeup Forever Step 1 Redness Correcting Primer & Shine Control
- Milk Hydro Grip Primer
- Smashbox Photo Finish Foundation Primer
- Smashbox Primerizer
- Stila One Step Primer
- Too Faced Hangover Primer
- Too Faced Shadow Insurance Eyeshadow Primer

Eyebrows:

- Anastasia Beverly Hills Brow Wiz

- Charlotte Tilbury Pillow Talk Lip Liners and Lipsticks
- Charlotte Tilbury Matte Revolution Lipstick in Very Victoria- taupe nude
- Dose of Colors Liquid Lipstick in Cork
- Fenty Beauty Gloss Bomb Universal Lip Luminizer
- Kevyn Aucoin The Molten Lip Color in Dolly, Nicole, Janet & Tori
- Kylie Matte Lip Kit in Kylie
- Mac Amplified Lipstick- Verve- Satin
- Mac Cremesheen Lipsticks- Dare You (Red)
- Mac Lip Pencils- Cork, Oak, Whirl
- Mac Lipglass
- Mac Lipstick Cream - Creme In Your Coffee (creamy mid tone pink brown- cremesheen)
- Mac Matte Lipsticks- Kinda Sexy
- Mac Satin Lipsticks- Media (Dark Red)
- Makeup Forever Endless Cacao Lip Pencil
- Maybelline Glosses
- Milani Lip Liner Pencils
- Nars Sheer Lipstick in Sexual Healing & Toleda
- Patrick Ta Major Glow Lip Shine
- Sephora "Perfect Nude" Lip Gel
- Stila Lip Glazes

Setting Spray:

- Charlotte Tilbury Airbrush Flawless Finish
- L'Oreal Paris True Match Lumi Shake & Glow Dew Mist
- Mac Fix+
- Tru Colors Cucumber (@trucolors.shoppe on Instagram)
- Urban Decay All Nighter

Brushes:

- Bdeillum Tools
 - ◆ Studio 365 Square Mask
 - ◆ Studio 710 Eye Liner
 - ◆ Studio 714 Flat Eye Definer
 - ◆ Studio 731 Mascara Fan Brush
 - ◆ Studio 758 Large Smudge
 - ◆ Studio 776 Blending
 - ◆ Studio 938 Blending Concealer
 - ◆ Studio 987 Face Blending
- Beauty Blender
- Blender Cleanser Brush Cleanser
- Brush Cleaning Mat
- Cinema Secrets

- Anastasia Beverly Hills Brow Freeze
- Maybelline Great Lash Clear Mascara (as brow gel)
- Maybelline Ultra Slim Eyebrow Pencil
- Patrick Ta Brow Wax
- West Barn Co Soap Brows

Eyeshadows:

- Charlotte Tilbury Eyes to Mesmerize Cream Eyeshadow (in any color)
- Charlotte Tilbury Jewel Pots Pillow Talk
- Charlotte Tilbury Pillowtalk Palette
- Charlotte Tilbury Pillowtalk Palette of Pops
- ColourPop Palettes
- Dior 5 Couleurs Couture Eyeshadow Palette
- Dior Backstage Eyeshadow Palettes (Warm, Cool, Rosewood Neutrals)
- Giorgio Armani Eye Tint Liquid Eyeshadow Matte
- Hourglass Scattered Glitter
- Huda Obsessions Purple Haze
- Lancome Hypnose 5-Color Eyeshadow Palette- Blue
- Lorac Pro Palette Noir
- Mac "In the Shadows" Eyeshadow Single
- Mac Loose Pigment Powders
- Mac "Mo Money Mo Problems" Eyeshadow Single
- Mac Silky Metallic Eyeshadow Sweet Heat
- Mac "Stormwatch" Matte Eyeshadow Single
- Mac "Tilt" Eyeshadow Single
- Makeup Forever Matte Eyeshadows
- Marc Jacobs Sequins
- Morphe Jaclyn Hill Palette
- Morphe James Charles Palette
- Makeup by Mario Shimmer Palette
- Naked by Urban Decay Palettes
- Natasha Denona Biba & Gold Palettes
- NYX Loose Metallic Pigments
- Pat McGrath
- Rare Beauty Palettes
- Sigma Beauty Ambiance Eyeshadow Palette
- Stila Liquid Eyeshadows
- Tarte Tartelette in Bloom Clay Eyeshadow Palette
- Tarte Tartelette Juicy Amazonian Clay
- Too Faced Chocolate Gold
- Too Faced Born This Way The Natural Nudes
- Visart Neutral Mattes, Paris Nudes, Paris Edit
- Visart Petites Mattes Cool
- Visart Petits Fours Lapis
- Wet n Wild Palettes

- ◆ All Natural Brush Soap
- ◆ Brush Cleansing Shampoo
- ◆ Makeup Brush Cleaner
- Dawn Liquid Soap- best for washing brushes
- Elf- great inexpensive brush options
 - ◆ Blush Brush
 - ◆ Buffing Foundation Brush
 - ◆ Concealer Brush
 - ◆ Contouring Brush
 - ◆ Domed Stipple Brush
 - ◆ Flawless Concealer Brush
 - ◆ Flawless Face Brush
 - ◆ Mascara & Shadow Shield
 - ◆ Precision Eyeliner Brush
 - ◆ Precision Foundation Swirl Brush
 - ◆ Putty Blush Brush
 - ◆ Putty Primer Applicator
 - ◆ Small Angled Brush
 - ◆ Small Stipple Brush
 - ◆ Total Face Sponge
- Mac
 - ◆ 109s Small Contour Brush
 - ◆ 150s Large Powder Brush
 - ◆ 168s Large Angled Contour Brush
 - ◆ 170 Synthetic Rounded Slant Brush
 - ◆ 209s Eye Liner Brush
 - ◆ 217s Blending Brush
 - ◆ 219s Pencil Brush
 - ◆ 224s Tapered Blending Brush
 - ◆ 231S Small Shader Brush
 - ◆ 239s Eye Shader Brush
 - ◆ 263S Small Angle Brush
 - ◆ 316 Lip Brush
 - ◆ Brush Cleanser
- Morphe- great inexpensive brush options
 - ◆ Morphe x Ariel Signature Look 12-Piece Face & Eye Brush Set
 - ◆ M164- Small Flat Angled Contour Brush
 - ◆ M213 Smudger Eyeliner Brush
 - ◆ M250 1 Detail Liner Eyeliner Brush
 - ◆ M330 Blending Crease Brush
 - ◆ M332 Fluffy Crease Eyeshadow Blender Brush
 - ◆ M421 Mini Concealer Brush
 - ◆ M433 Pro Firm Blending Fluff Brush
 - ◆ M434 Blending Buffer Brush
 - ◆ M438 Pointed Contour Brush
 - ◆ M439 Deluxe Buffer Brush

Eyeliners:

- Danessa Myrics Colorfix (can also be used on top of eyeshadow!)
- Il Makiage Ink Liner in Black
- Inglot 77 Black Gel Eyeliner
- Inglot Duraline
- L'Oréal Infallible Eyeliner
- Mac Chromaline in Black Black
- Sephora Brand Eyeliner
- Sephora Eyeliner Liquid Intense Ink Liner
- Surrat Auto-Graphique Liner in Chat Noir
- Urban Decay 24/7 Glide On Eye Pencil (All Colors)
- Urban Decay Heavy Metal Glitter Eyeliner

Lashes:

- Aliexpress
- Ardell Individual Lash Trios

Foundations:

- Charlotte Tilbury Airbrush Flawless (Full Coverage)
- Charlotte Tilbury Beautiful Skin Medium Coverage Foundation
- Charlotte Tilbury Light Wonder
- Dior Airflash
- Elf Flawless Finish Foundation
- Estée Lauder Double Wear Foundation
- Face Atelier Foundation
- Giorgio Armani Luminous Silk
- Inglot HD Perfect Cover Up
- Laura Mercier Tinted Moisturizer
- L'Oréal Infallible Freshwear 24 Hour Liquid Foundation
- L'oreal Infallible Pro Matte Foundation
- Mac Studio Fix Fluid
- Maybelline Dream Fresh BB Cream 8-in-1 Skin Perfector
- MUFE Invisible Cover Foundation
- Nars Light Reflecting
- Nars Soft Matte Foundation
- Nars Radiant Foundation
- RCMA Foundation Palette
- Revlon Insta-Filter Photoready Foundation
- Tom Ford Shade & Illuminate Soft Radiance

Correctors & Concealers:

- Armani Luminous Silk Concealer
- Covergirl TruBlend Undercover Concealer
- Fenty Beauty Pro Filt'r Instant Touch

- ◆ M441 Pro Firm Blending Crease Brush
- ◆ M456 Mini Firm Blending Brush
- ◆ V200 Detail Packing Eyeshadow Brush
- ◆ V202 Multifunctional Packing Eyeshadow
- MyKitCo
 - ◆ 1.11 Pro My Tiny Liner
 - ◆ 1.13 My Detailed Smudge Brush
 - ◆ 1.17 Pro My Tiny Angle Brush
 - ◆ 1.22 Pro My Feliner
 - ◆ 1.36 Pro My Art Liner
 - ◆ 1.9 Pro My Mini Sharp
- Nars
 - ◆ #22 Blending Brush
 - ◆ ITA Kabuki Brush
 - ◆ Yachiyo Brush (for blush)
- Real Techniques
 - ◆ 200 Expert Face Brush
 - ◆ 400 Blush Brush
 - ◆ Deluxe Crease Brush
 - ◆ Expert Concealer Brush
 - ◆ Makeup Setting Brush
 - ◆ Powder Brush
- Sigma
 - ◆ E06 Winged Liner Brush
 - ◆ E15 Flat Definer Brush
 - ◆ E21 Smudge Brush
 - ◆ E25 Blending Brush
 - ◆ E30 Pencil Brush
 - ◆ E40 Tapered Blending Brush
 - ◆ E45 Small Tapered Blending Brush
 - ◆ E55 Eye Shading Brush
 - ◆ E65 Small Angle Brush
 - ◆ Essential Brush Kit
 - ◆ F03 High Cheekbone Highlighter Brush
 - ◆ F06 Powder Sweep Brush
 - ◆ F40 Large Angled Contour Brush
 - ◆ F70 Concealer Brush
 - ◆ F79 Concealer Blend Kabuki Brush
 - ◆ S10 Serum Brush
- Sephora Collection Pro Eye Liner Brush #22

Other:

- 70% Alcohol
- Esmalte Endurecedor para Uñas (Nail Hardener)- hurt me but people love it
- Eyelash Separator

- Inglot Under Eye Concealer
- Kat Von D Lock It Concealer Creme
- Kosas
- LA Girl Concealer
- Mac Concealer Palette
- Mac Studio Finish Concealers
- Makeup Forever Underpainting Color Correction Palette
- Nars Radiant Creamy Concealer
- Nars Soft Matte Concealer
- NYX Bare with Me Concealer Serum
- NYX 3C Color Correcting Concealer Palette
- NYX HD Photogenic Concealer Wand
- Rare Beauty Concealer
- Surratt Surreal Skin Concealer
- Surratt Concealer Palette
- Too Faced Concealer
- Tarte Shape Tape Concealer (Oily Skin)

Contour:

- Anastasia Beverly Hills Contour Powder Palette
- Elf Cosmetics Cream Contour Palette
- Makeup Forever HD Skin Cream Contour & Highlight Sculpting Palette

Translucent Powder:

- Airspun Loose Face Powder
- Charlotte Tilbury Airbrush Flawless Finish in 2 (Pressed Powder)
- Hourglass Ambient Powders
- Huda Cupcake
- Inglot (Loose Powder)
- Laura Mercier (Loose Powder)

- Freck- freckles
- Makeup Forever 12 Flash Color Case
- Makeup Sharpener by Revlon
- Mascara Spoolies
- Neewer Makeup Ring Light
- Palette & Knife
- Precision Tip Cotton Swabs
- RCMA Foundation Thinner
- Small Makeup Organizer
- Sexapeel Spray Exfoliator
- Tabletop Makeup Vanity Mirror
- Zuca
 - ◆ Artist Backpack
 - ◆ Pro Artist Case

Hair Products:

- Amika Soulfood Mask
- Act + Acre Cold Pressed Scalp Detox
- Elchim Hair Dryer
- Eva Nyc Mane Magic 10 in 1 Priming Spray
- IGK Beach Club Texturizing Spray
- IGK Charcoal Detox Dry Shampoo
- IGK Good Behavior Spray
- IGK Hot Girls Shampoo & Conditioner
- IGK Mistress Hydrating Hair Balm
- IGK Rich Kid Coconut Oil Gel
- K18 Biomimetic Hairscience Hair Mask
- Kerastase Smoothing Taming Milk
- Kellie Little Hair Brush
- L'oreal Everpure Frizz Defy Shampoo & Conditioner
- Momo Shampoo
- Olaplex Shampoo & Conditioner
- Redken Frizz Dismiss Rebel Tame Cream
- Shhhowercap

Skincare & Makeup Routine:

1. Exfoliate
2. Cleanse
3. Toner
4. Lip Balm
5. Serum
6. Eye Cream
7. Moisturizer
8. Oil
9. Primer
10. Eyeshadow Primer
11. Eyebrows
12. Eyeshadow
13. Eyeliner (top)
14. Lashes
15. Foundation
16. Color Corrector
17. Concealer
18. Contour
19. Translucent Powder
20. Bronzer
21. Blush
22. Highlighter
23. Eyeliner (bottom)
24. Mascara
25. Lips
26. Setting Spray